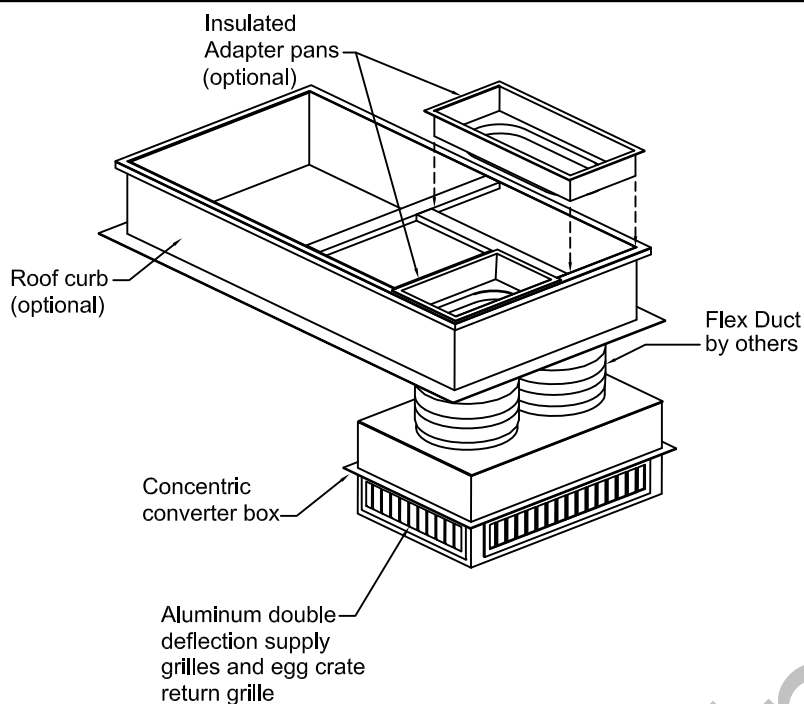
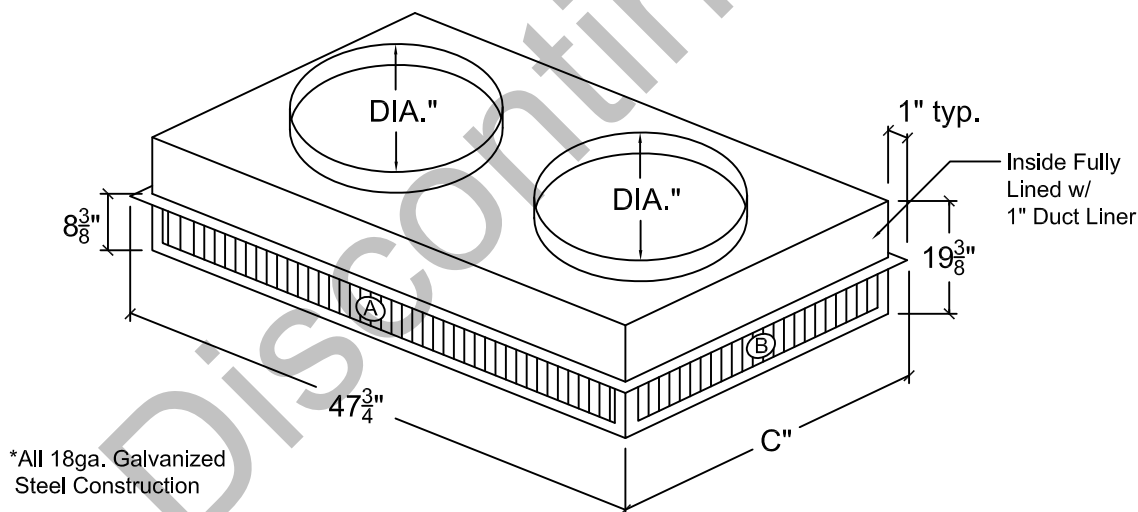
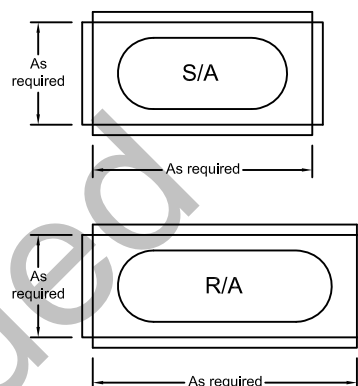


**Drop Diffuser Plenums  
Concentric-Supply / Return**



**NOTES:**

1. Install insulated adapter pans before A/C unit is placed on curb.
2. Field baffles may be required for balancing.
3. Concentric converter box must be field supported.

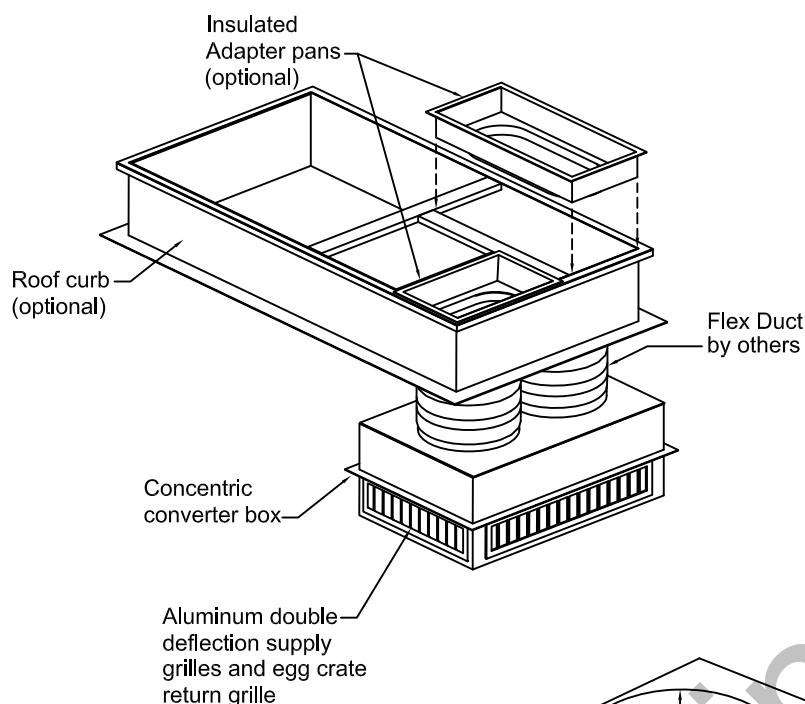


\*All 18ga. Galvanized Steel Construction

QTY.	MODEL#	"A"GRILLE	"B"GRILLE	"C"	RETURN	DIA.	CFM	THROW	S.P.	N.C.	neck vel.	OPTIONS
	CO-12	42x4	18x4	23-3/4	33x9	14	1,200	11-17	.21	11	1123	
	CO-16	42x4	18x4	23-3/4	33x9	16	1,600	13-22	.21	16	1145	
	CO-20	42x4	18x4	23-3/4	33x9	18	2,000	17-27	.21	24	1132	
	CO-30	42x4	24x4	29-3/4	33x15	20	3,000	23-35	.29	36	1375	

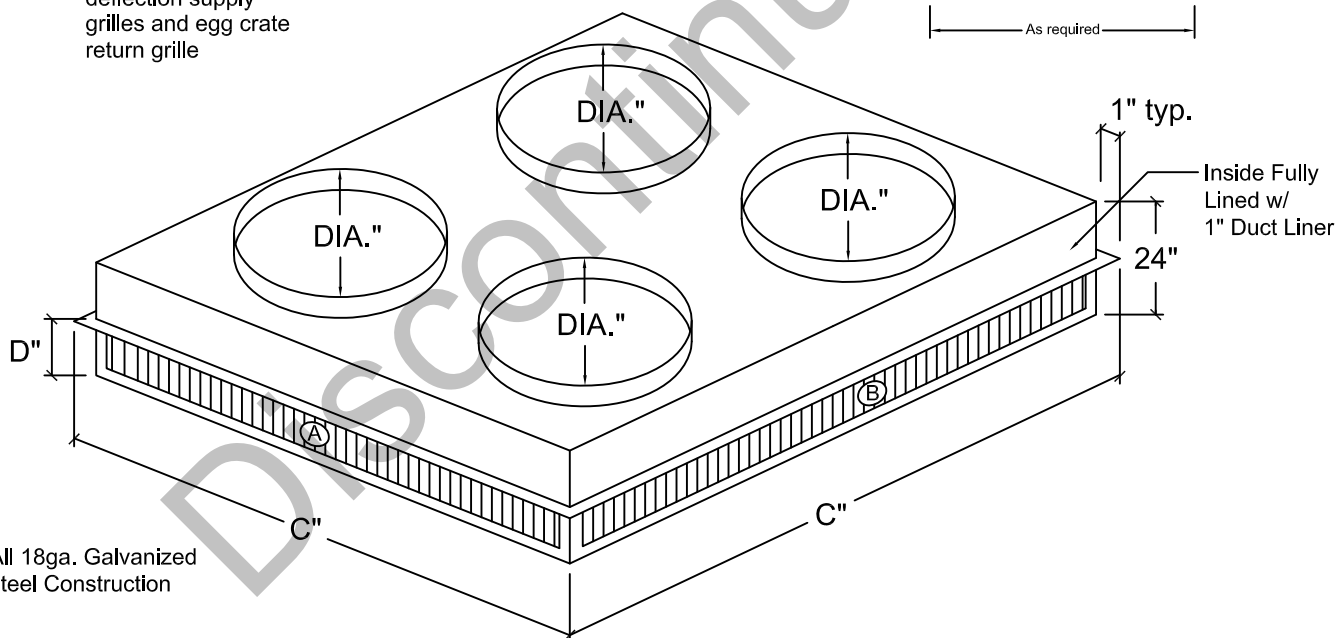
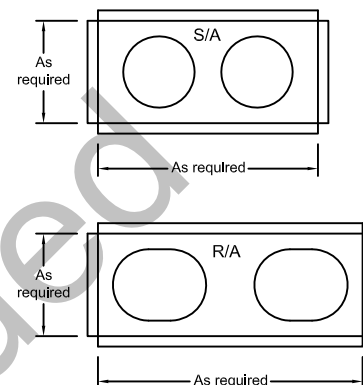
Job Name:	Model CO Concentric-Supply/Return (T-bar grid units)		
Location:			
Architect:	Drawn By: CLJ	Date: 3-10-03	Rev. Date: 12-1-10
Engineer:	Rev. no.: 7	Approved By: BGT	Dwg. no.: H-9
Contractor:			

## Drop Diffuser Plenums Concentric-Supply / Return



### NOTES:

1. Install insulated adapter pans before A/C unit is placed on curb.
2. Field baffles may be required for balancing.
3. Concentric converter box must be field supported.

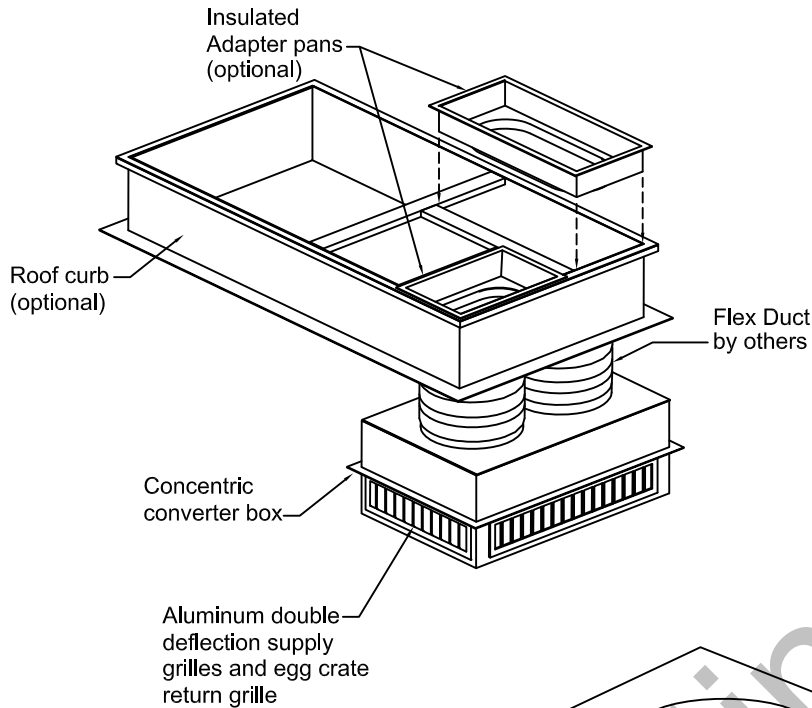


\*All 18ga. Galvanized Steel Construction

QTY.	MODEL#	"A"GRILLE	"B"GRILLE	"C"	RETURN	"D"	DIA.	CFM	THROW	S.P.	N.C.	neck vel.	OPTIONS
	CO-40	42x4	42x4	47-3/4	26x26	9-3/8	18	4,000	32-55	.21	31	1132	
	CO-60	40x8	40x8	53-3/4	32x32	13-3/8	20	6,000	35-68	.28	24	1375	
	CO-80	48x8	48x8	59-3/4	38x38	13-3/8	20	8,000	43-80	.50	29	1834	

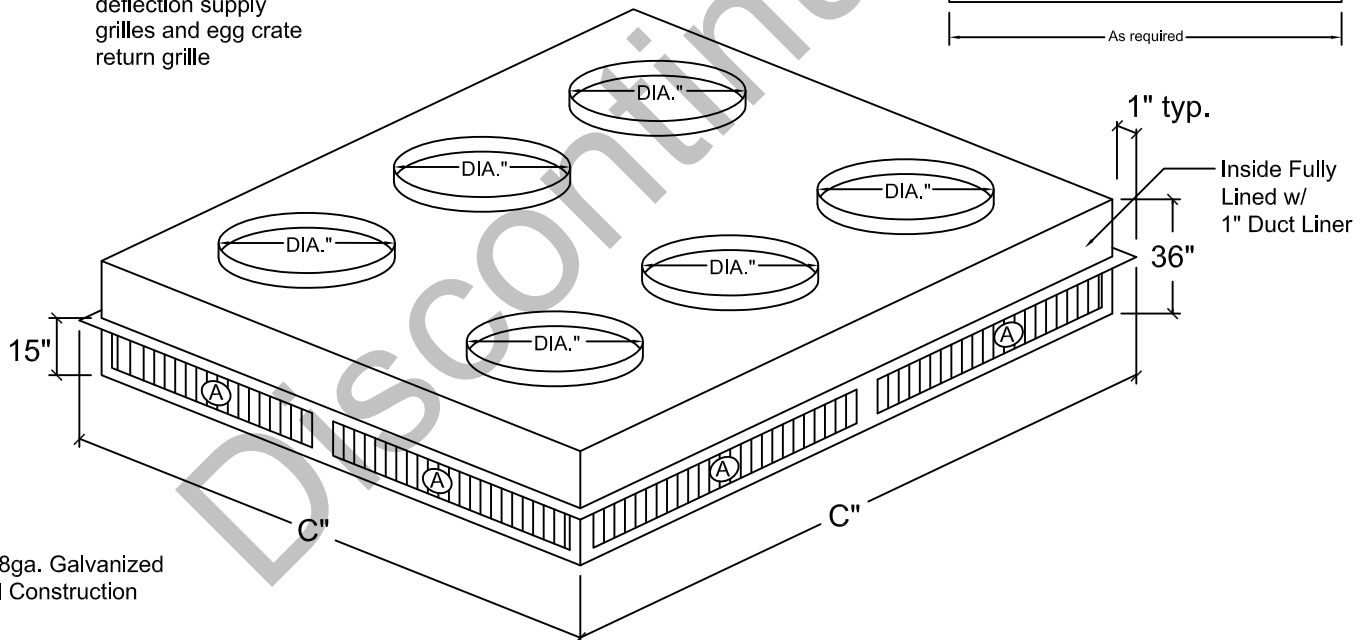
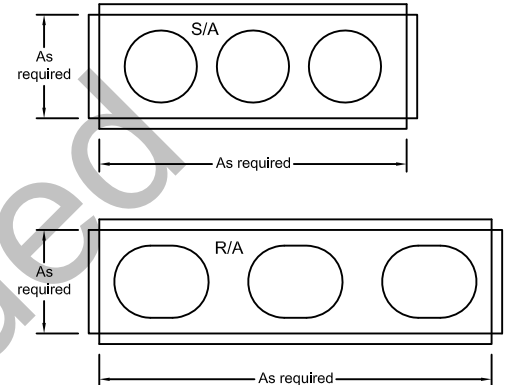
Job Name:	Model CO Concentric-Supply/Return (T-bar grid units)		
Location:			
Architect:	Drawn By: CLJ	Date: 3-10-03	Rev. Date: 12-1-10
Engineer:	Rev. no.: 7	Approved By: BGT	Dwg. no.: H-10
Contractor:			

**Drop Diffuser Plenums**  
**Concentric-Supply / Return**



**NOTES:**

1. Install insulated adapter pans before A/C unit is placed on curb.
2. Field baffles may be required for balancing.
3. Concentric converter box must be field supported.



QTY.	MODEL#	"A"GRILLE	"C"	RETURN	DIA.	CFM	THROW	S.P.	N.C.	neck vel.	OPTIONS
	CO-100	26x12	65-3/4	40x40	20	10,000	30-63	.33	19	1528	
	CO-120	28x12	65-3/4	44x44	20	11,000	27-58	.30	17	1470	

Job Name:

Location:

Architect:

Engineer:

Contractor:

**Model CO Concentric-Supply/Return**  
**(T-bar grid units)**

Drawn By:  
CLJ

Rev. no.:  
9

Date:  
3-10-03

Approved By:  
BGT

Rev. Date:  
12-1-10

Dwg. no.:  
H-11